
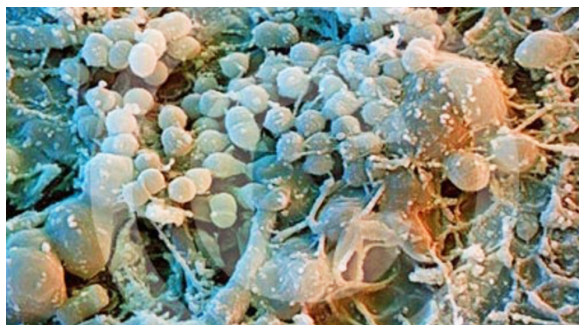


## WHY BRUSH DAILY?

We brush our teeth twice a day to prevent cavities. Dogs rarely get cavities, and cats never get cavities, so brushing your pet's mouth once a day is fine. Daily brushing, as well as regular cleanings under anesthesia at your veterinarian or veterinary dentist's office, is the best way to prevent periodontal disease.

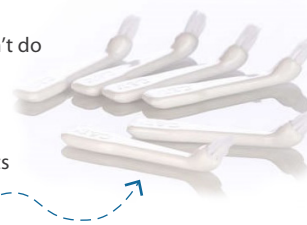


Periodontal disease (disease of the gums and bone supporting the teeth) is one of the most common diseases found in dogs and cats. It can lead to loose teeth, pain, and infection. Human studies show it is associated with heart disease, stroke, some kinds of cancer, and diabetes.

Periodontal disease is caused by plaque bacteria. Plaque begins accumulating almost immediately after brushing, but it is easily brushed away. Plaque begins to turn to calculus (tartar) about 36 hours after brushing and this can only be removed with a professional cleaning under anesthesia. This is why daily brushing is important.

### Toothbrushes

Use a bristle brush with a handle. Plastic bristles like the ones found on finger brushes don't do a good job getting under the gumline. Finger brushes are difficult to use on the insides of teeth in dogs and are almost impossible to fit in a cat's mouth. They also put your finger at risk of being inadvertently bitten! Two headed toothbrushes with a large and small brush work well for large and medium sized dogs. This toothbrush works well for cats and small dogs (Shh! Don't tell your dog it's a cat toothbrush)



### Toothpaste

Although the mechanical action of the toothbrush is far more important than any properties of the toothpaste, the purpose of the toothpaste is to make toothbrushing more palatable and to provide a lubricant for brushing. You can find a list of toothpastes that have been demonstrated to have additional properties that help remove plaque at: [www.vohc.com](http://www.vohc.com). However, whichever toothpaste your dog or cat likes is the best for toothbrushing. **DO NOT** use human toothpaste because this has fluoride that is toxic if swallowed.

### About us...

Animal Medical Center of Seattle (AMCS) provides advanced specialty medical treatment in the greater Seattle area and beyond. Our privately-owned hospital offers Dentistry, Oncology, Internal Medicine, Interventional Radiology and 24/7 Emergency and Critical Care. Our dedicated team works collaboratively with your primary veterinarian to provide an additional level of specialized treatment. Combine this with a team of skilled and compassionate veterinary professionals, and you can rest assured that the comfort and well-being of your pet is always a priority with us.



**Animal  
Medical Center  
of Seattle**

17518 15th Ave NE, Shoreline, WA 98155  
Tel: (206) 204-3366 | Fax: (206) 204-3858  
[www.AnimalMedicalSpecialists.com](http://www.AnimalMedicalSpecialists.com)